

**MON 15** BURGER & QUIZ | 6PM FOOD / 7PM QUIZ | CAFE BAR | £5 

**WED 17** YOGA 9AM & 11AM | ALEXANDER TECHNIQUE 10AM & 12PM | ROOM 218  
WELLBEING FAIR | ROOFTOP BAR | 12PM  
BELGRAVE BOOGIE | 7:30PM | BELGRAVE | £5 

**THURS 18** EMO NIGHT | 7PM  
KEY CLUB | £5 

**FRI 19**  
FRESHERS FAIR | 12PM - 4PM  
THE VENUE, ROOFTOP BAR & 219

**SAT 20**  
LAMBRINI'S BIG BALLS BINGO  
7PM | THE VENUE | £5 

**WELCOME  
WEEK 2**

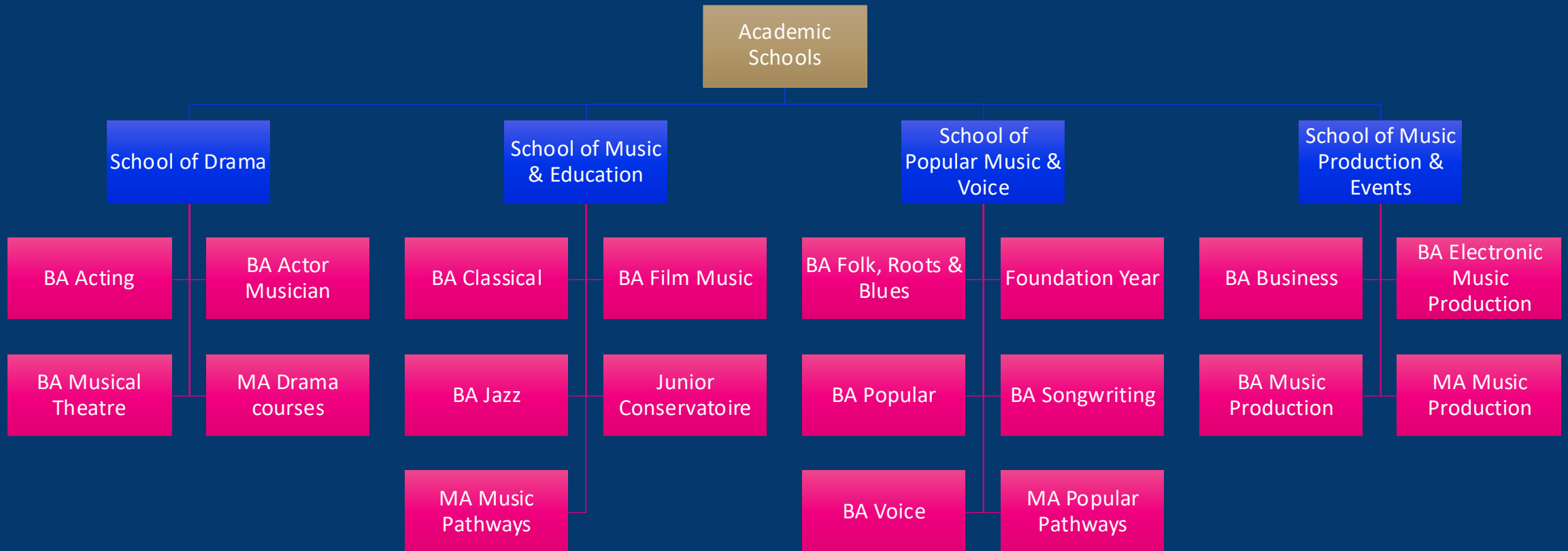


# Welcome to Leeds Conservatoire

CELEBRATING SIXTY YEARS

Foundation Year





# Compulsory Sessions

# Key Events

## Enrolment

In person enrolment  
and ID card collection

[enrolment@lcm.ac.uk](mailto:enrolment@lcm.ac.uk)

## Course Induction

Information and insight  
into your course

Meet your course team

## Promoting a Safe and Inclusive Environment

# Promoting a Safe and Inclusive Environment at Leeds Conservatoire

*Why is it so Important you  
attend this Talk*

**Kirstin Thompson**  
**Head of Student Support and Wellbeing**

# Why This Talk Is So Important

---

- Explore what we mean by values and community
- Gain an understanding of Office for Students E6 Condition of Registration and how they affect you
- Define sexual harassment and misconduct
- Understand the concept of consent and being an active bystander
- Learn how to seek support and report any issues

# The Legal Bit

# What is the Office for Students?

- The Office for Students (OfS) is the independent regulator of higher education in England.
- Established in 2018, it oversees universities, colleges, and other higher education providers to ensure they deliver high-quality education and good outcomes for students.
- Its main responsibilities include promoting equality of opportunity, quality and standards, and student protection.

Office for  
Students



# Condition E6

- Condition E6 is a new regulatory requirement that will take effect on 1 August 2025.
- This condition requires us to set out how we aim to prevent harassment and sexual misconduct and support those who have experienced either of these in our setting.
- This includes how incidents can be reported, our investigation process and how we support students.



# Trigger Warning

- **Content Warning** This session will cover themes of *harassment* and *sexual misconduct* as part of a government-led initiative across all universities. Some material—including videos—may be distressing.
- If you feel uncomfortable at any point, you are free to leave the session.
- Opt out by emailing [safeguarding@lcm.ac.uk](mailto:safeguarding@lcm.ac.uk)

# Why it Matters

**It requires universities and colleges to have clear policies and procedures to handle harassment and sexual misconduct.**

**It promotes a safe and inclusive learning and working environment.**

**Helps create an environment where students feel confident to report incidents.**

**A safer campus promotes better learning outcomes and student well-being**

# When Are The Talk?

- These talks will take place on Wednesday 17<sup>th</sup> September in the afternoon
  - You will attend the talk of the school that you are part of
  - The talks will be around 40/45 mins
  - You will be required to record your attendance. These talks are mandatory and a requirement of your registration
- 
- **Talk 1- 12:30-1:30pm - Music and Education**
  - **Talk 2- 2:00-3:00pm- Drama and Production and Events**
  - **Talk 3-3:30-4:30pm- Pop music and Voice**



**THANK YOU  
FOR LISTENING**

See you all on  
Wednesday

# Boost - Transitioning to Higher Education

LEEDS  
CONSERVATOIRE

Extended Induction: stuff you need to know to thrive at the conservatoire

Online class via Zoom

Introduction on Friday at 10am: Transitioning to HE

Weekly Friday at 10am (will be in timetable for BA Music students) with recordings available.

Mini courses

Space page with accompanying resources



<https://leedsconservatoire.info/Boost>



**MON 15** BURGER & QUIZ | 6PM FOOD / 7PM QUIZ | CAFE BAR | £5 

**WED 17** YOGA 9AM & 11AM | ALEXANDER TECHNIQUE 10AM & 12PM | ROOM 218  
WELLBEING FAIR | ROOFTOP BAR | 12PM  
BELGRAVE BOOGIE | 7:30PM | BELGRAVE | £5 

**THURS 18** EMO NIGHT | 7PM  
KEY CLUB | £5 

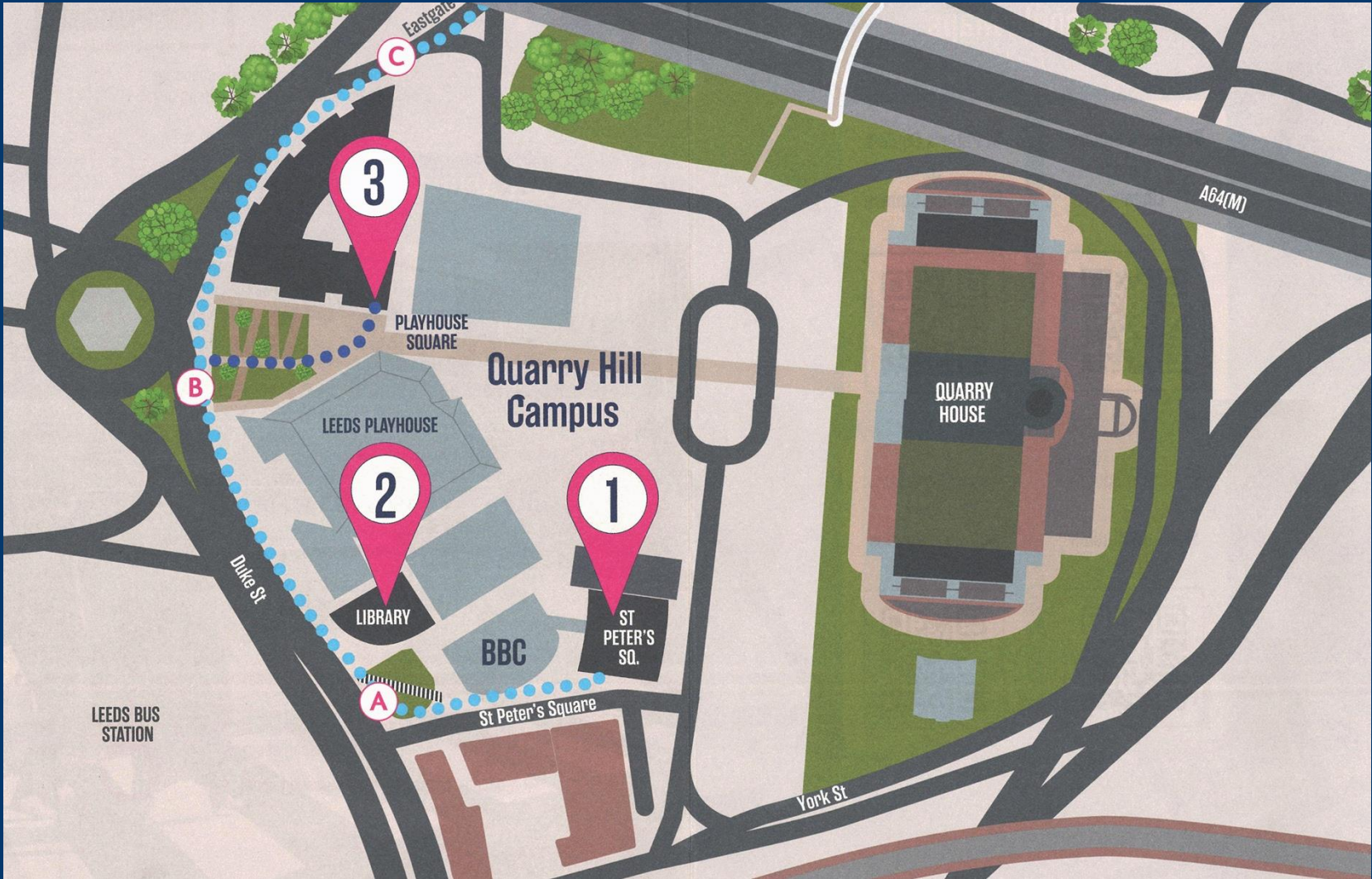
**FRI 19**  
FRESHERS FAIR | 12PM - 4PM  
THE VENUE, ROOFTOP BAR & 219

**SAT 20**  
LAMBRINI'S BIG BALLS BINGO  
7PM | THE VENUE | £5 

**WELCOME  
WEEK 2**



# Finding your way around



# St Peter's Square



# The Library



# Playhouse Square



# Mabgate



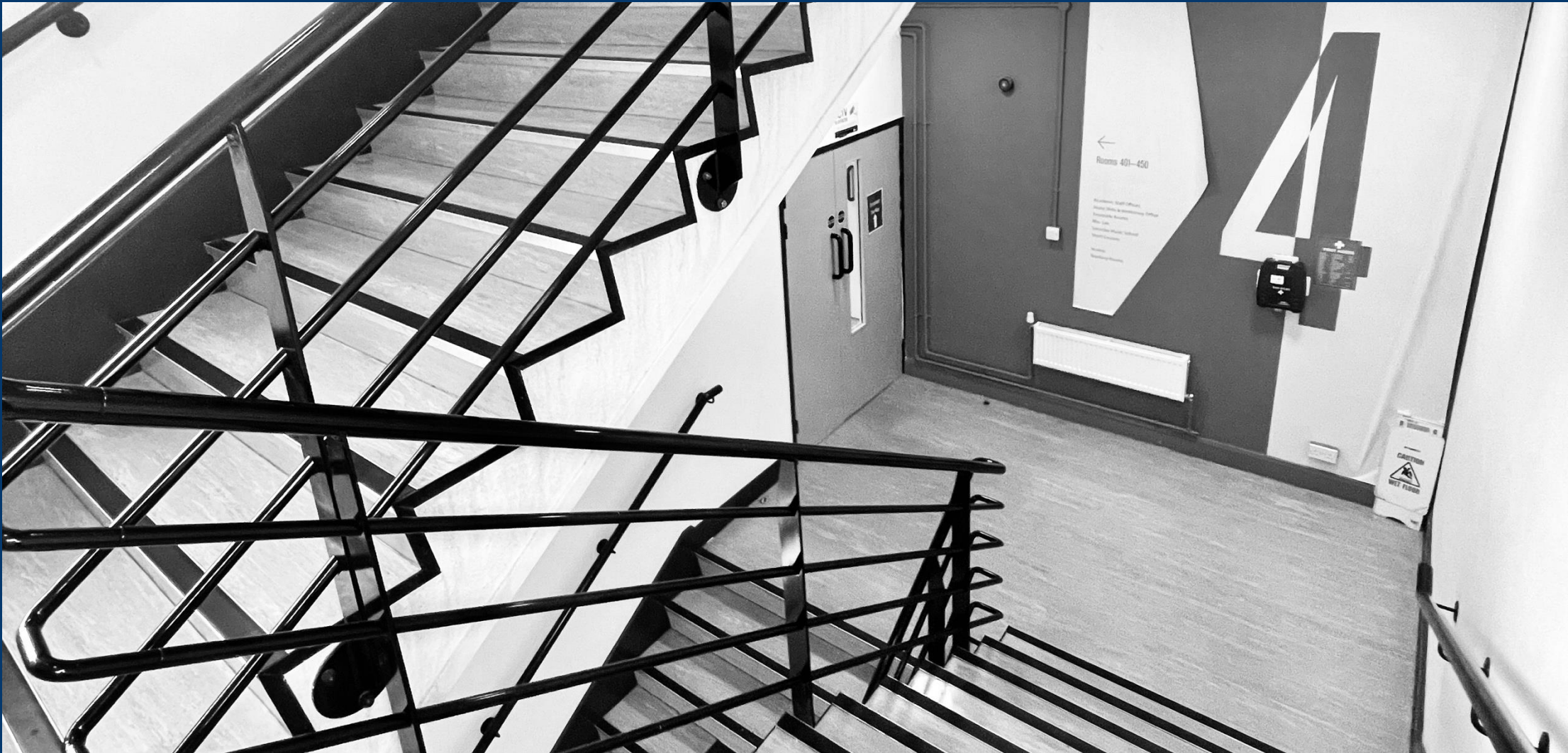
# Opening Hours (Term Time)

Weekdays: 7.30am  
until Midnight

Weekends: 9 am  
to 5pm



[students.leedsconservatoire.ac.uk/campus/](https://students.leedsconservatoire.ac.uk/campus/)



# Don't know where you're going? Ask!



# Fire Alarm



# Online Systems and Communication

# New Student Information Site

---

[students.leedsconservatoire.ac.uk](https://students.leedsconservatoire.ac.uk)

is now the home of all the Student Information and Help resources, which used to be on Space.

Space is now a dedicated platform for learning & teaching: your modules, assessments, and timetable.

## Contact Us

---

You can contact the TEL Team ([space@leedsconservatoire.ac.uk](mailto:space@leedsconservatoire.ac.uk)) if you're struggling to find information.



# Your online world


- Space
- Show
- Panopto
- Microsoft 365

Learning



- Email
- Teams
- Text

Communication



- Student Info Site
- Life
- Socials

Information



[portal.leedsconservatoire.ac.uk](https://portal.leedsconservatoire.ac.uk)

Instagram: @lifeatleedsconservatoire



This new site is under construction: some content may not be available yet. Check back soon!

## Systems & IT

How you access and get support with the various virtual learning environment and IT systems you use during your studies.

 Browse Help Guides

 Systems Portal

 Your IT Account

 About LC Systems

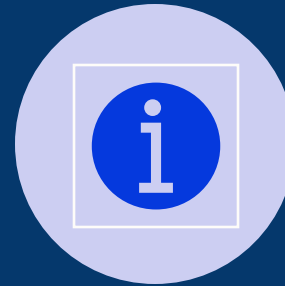


[leedsconservatoire.info/systems-it](https://leedsconservatoire.info/systems-it)

# Help this week



Student Support Help desk in 402, staffed by members of our Student Support Team.



General enquiries: pop up desk in 416 and Cafe:Bar



There's also a team of stewards who will signpost you to where you need to be and take you to locations around our main building



[help@leedsconservatoire.ac.uk](mailto:help@leedsconservatoire.ac.uk)

# CELEBRATING SIXTY YEARS

#LeedsConservatoire60  
[leedsconservatoire.ac.uk/60years](https://leedsconservatoire.ac.uk/60years)

f @ d v in

LEEDS  
CONSERVATOIRE